

AF CB CP CS CV HD HS R **SL** WE XE XL

**SPECIFICATIONS** (See notes 1 and 2)

**Loudspeaker Type:** 3-way, Electronically controlled, full-range

**Operating Range:** 75 Hz - 18 kHz, 90 Hz - 18 kHz (+/-3dB)

**Max Input (Passive):**

400W continuous, 1000W program  
57 volts RMS, 126 volts momentary peak  
Recommended Power Amp: 830W to 1200W @ 8 Ohms

**Max Inputs (Biamp):**

LF: (Same as for Passive mode)  
Recommended LF Power Amp: (Same as for Passive mode)  
MF/HF: 80W continuous, 200W program  
25 volts RMS, 57 volts momentary peak  
Recommended MF/HF Power Amp: 170W to 240W @ 8 Ohms

**Sensitivity 1W/1m:** 108 dB SPL (80 Hz - 16 kHz 1/3 octave bands)

109 dB SPL (250 Hz - 4 kHz speech range)

**Maximum Output:** 134 dB SPL / 141 dB SPL (peak)

**Nominal Impedance (passive):** 8 Ohms

**Min Impedance:** 4.1 Ohms @ 340 Hz

**Nominal Impedances (Biamp):** LF: 8 Ohms, HF: 8 Ohms

**Nominal -6dB Beamwidth:**

65° H (+18° / -23°, 630 Hz - 16 kHz)

50° V (+28° / -18°, 630 Hz - 16 kHz)

**Axial Q / DI:** 23.6 / 13.7, 630 Hz - 16 kHz

**Crossover Frequencies:** 650 Hz / 3 kHz

**Recommended Signal Processing:**

650 Hz crossover (for biamp)  
60 Hz high pass filter

**Drivers (Ferrofluid-cooled):**

LF (2) 10" triple-spider, cast frame  
MF (1) M200 2", non-metallic diaphragm  
HF (1) VHF100 1" exit, non-metallic diaphragm

**Driver Protection:** PowerSense™ DDP

**Input Connection:** (2) Neutrik NL4MP

(2) dual banana jacks

**Controls:** Passive / Biamp switch

**Enclosure:** 13-ply 18 mm Baltic birch, Polane painted (see options)

**Enclosure Hardware:**

(2) steel, recessed bar handles

**Mounting / Rigging Provisions:**

(8) 3/8-16 rigging points, W.L.L. 300 lb. vertical pull each

(3) Pull-back points, W.L.L. 60 lb. each

**Grille:** 16 gauge perforated steel (see options)

**Required Accessories:** Electronic speaker controller

**Supplied Accessories:** (4) Rubber feet with mounting screws

**Optional Accessories:** EYBLTKIT: (4) forged 3/8-16 eyebolts

SC21.1: analog speaker controller

DSC42: digital speaker controller

**Dimensions:** Height: 33.4 in. / 849 mm

Width (front): 19.9 in. / 504 mm

Width (rear): 12.2 in. / 309 mm

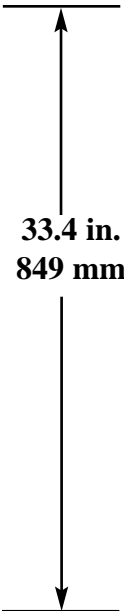
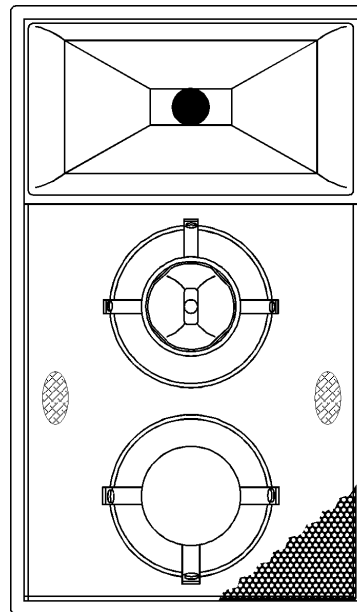
Depth: 20.25 in. / 514 mm

**Weight:** 133.5 lb. / 60.6 kg

**Shipping Weight:** 151.5 lb. / 68.7 kg

**1. Sensitivity:** Free field pink noise measurement at 20 ft / 6.1 m at 10% power; extrapolated to 1 meter and an input of 2.83 volts RMS.

**2. Watts:** All wattage figures are calculated using the rated nominal impedance.



**APPLICATIONS:**

- Arenas / Sports Venues
- Houses of Worship
- Performing Arts Centers
- Concerts
- Theaters
- Dance Clubs
- Portable SR Systems

**DESCRIPTION**

The Community Solutions SLS960 loudspeaker is a high output, high sensitivity, horn-loaded, three-way, full-range loudspeaker system with an integral one-piece fiberglass baffle of Wavefront Coherent™ design. It provides excellent full-range musical reinforcement. Engineered for use in portable or permanent installations, the loudspeaker enclosure is constructed of void-free, heavily braced Baltic plywood with integral steel bracing connected to threaded 3/8 in. nuts which provide robust suspension points for vertical or horizontal mounting. The system may be used in passive mode or switched for bi-amplification. Available in black or white with white grille cover, with or without handles. Five year limited warranty.

Use with Community SBS Series loudspeakers and the SC21 system controller or the DSC42 digital system controller.

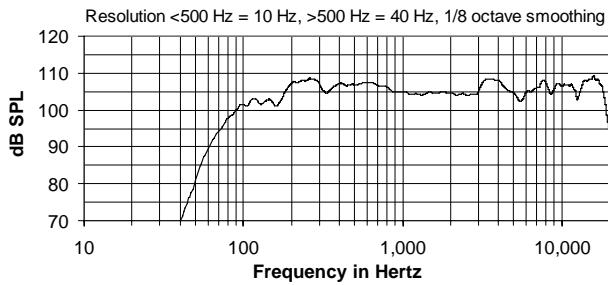
**OPTIONS:**

SLS960 = Black paint with handles, no grille cloth.

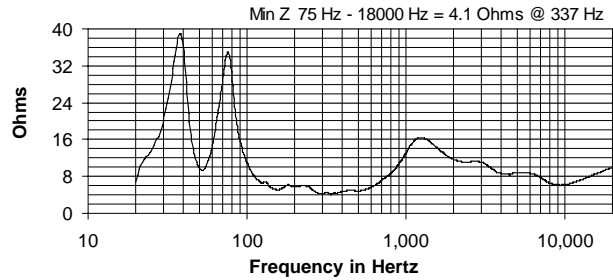
SLS960WHT = White paint, no handles, white grille cloth

AF CB CP CS CV HD HS R **SL** WE XE XL

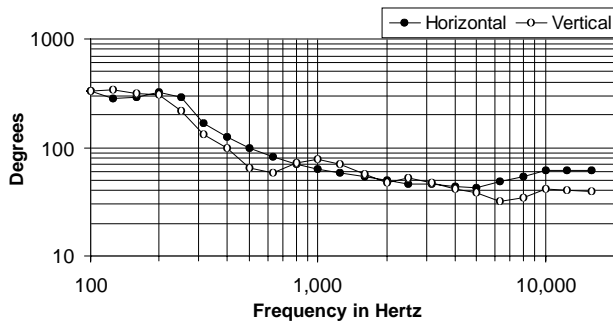
**FREQUENCY RESPONSE (WITH CONTROLLER)**



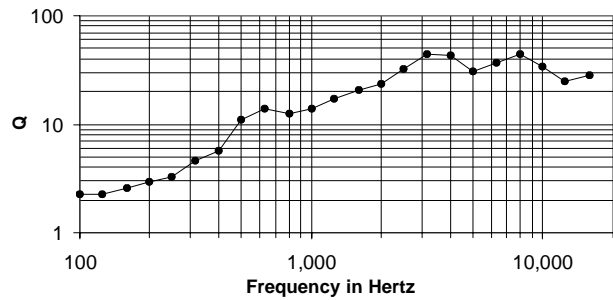
**IMPEDANCE**



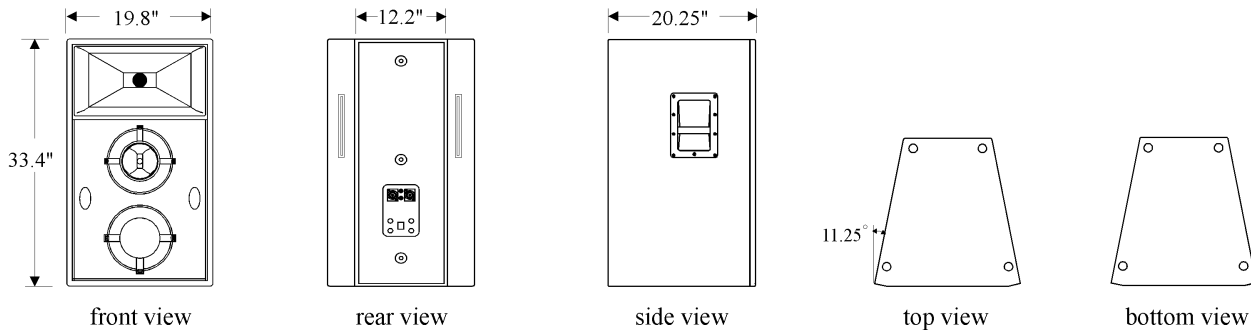
**BEAMWIDTH**



**AXIAL Q**



**DIMENSIONS**



**ARCHITECTS' AND ENGINEERS' SPECIFICATIONS**

The loudspeaker system shall be a horn-loaded, three-way, full-range bass reflex trapezoidal design with two 10 in. triple-spider Ferrofluid-cooled woofers, one 2 in. exit Ferrofluid-cooled midrange compression driver with a non-metallic diaphragm and one 1 in. exit HF driver with a non-metallic diaphragm mounted on a fiberglass waveguide. Drivers shall be connected to an integral crossover with crossover frequencies of 650 Hz and 3 kHz and integral over-current protection circuitry using high positive current coefficient resistors. There shall be two Neutrik NL4MP and one dual banana input connectors. The loudspeaker enclosure shall be well-braced 18 mm 13-ply Baltic birch with a 16 gauge perforated steel grille and finished with black [white] paint. There shall be eight 3/8-16 integral threaded mounting points connected to internal steel bracing. The system shall have an amplitude response of 90 Hz to 18 kHz (+/- 3 dB), input capability of 57V RMS, 108 dB sensitivity at one meter and 2.83 V / 8 ohms nominal impedance. The nominal dispersion shall be 65°H x 50° V from 630 Hz to 16 kHz. The loudspeaker shall be 33.4 in. (849 mm) H x 19.8 in. (504 mm) W (front) x 12.2 in. (309 mm) W (rear) x 20.25 in. (514 mm) D and weigh 133.5 lbs. (60.6 kg).

Specifications subject to change without notice.